

Worldwide Network



● HEAD OFFICE / ENGINEERING CENTER

2-8-1 Akanehama, Narashino-shi, Chiba 275-0024, Japan
Tel: 81-47-451-1111
URL <https://www.toyo-eng.com/jp/>

● TOKYO HEAD OFFICE

HIBIYA FORT TOWER, 16th Floor 1-1, Nishi Shimbashi 1-chome Minato-ku, Tokyo 105-0003, Japan
Tel: 81-3-3508-0111

Overseas Offices

● Jakarta

Wisma IKPT, 2nd Fl., JL. MT. Haryono Kav. 4-5, Jakarta 12830, Indonesia
Tel: 62-21-835-4170 Fax: 62-21-835-4149

● Moscow

Room No. 605, Entrance 3, World Trade Center, Krasnopresnenskaya Nab., 12, Moscow 123610, Russia
Tel: 7-495-258-2064/1504

Overseas Group Companies

■ Toyo Engineering Korea Limited

Toyo B/D. 11, Teheran-ro 37-gil, (Yeoksam-dong), Gangnam-gu, Seoul, 06142, Korea
Tel: 82-2-2189-1620 Fax: 82-2-2189-1890
URL <https://www.toyo-eng.com/kr/>
EPC for plants and facilities

■ Toyo Engineering Corporation (China)

7F, New Bund Oriental Plaza I, No.512 Haiyang West Road, Pudong New District, Shanghai, 200124, China
Tel: 86-21-6187-1270 Fax: 86-21-5888-8864/8874
URL <https://www.toyo-eng.com/cn/>
EPC for plants and facilities

■ PT. Inti Karya Persada Teknik (IKPT)

JL. MT. Haryono Kav. 4-5, Jakarta 12830, Indonesia
Tel: 62-21-829-2177
Fax: 62-21-828-1444/62-21-835-3091
URL <http://www.ikpt.com/>
EPC for plants and facilities

■ Toyo Engineering & Construction Sdn. Bhd.

Suite 25.4, 25th Fl., Menara Haw Par, Jalan Sultan Ismail, 50250 Kuala Lumpur, Malaysia
Tel: 60-3-2731-1100 Fax: 60-3-2731-1110
URL <https://www.toyo-eng.com/my/>
EPC for plants and facilities

■ Toyo Engineering India Private Limited

"Toyo Technology Centre", 71, Kanjur Village Road, Kanjurmarg (East), Mumbai-400 042, India
Tel: 91-22-2573-5000 Fax: 91-22-2573-5842
URL <https://www.toyo-eng.com/in/>
EPC for plants and facilities

■ Toyo Engineering Europe, S.r.l.

10 Via Alzata, 24030 Villa d'Adda, Bergamo, Italy
Tel: 39-035-4390520
Procurement services in Europe

■ Toyo Engineering Canada Ltd.

640, 840-6th Avenue SW Calgary, Alberta, Canada T2P 3E5
Tel: 1-403-266-4400 Mobile: 1-403-830-4514
URL <https://www.toyo-eng.com/ca/>
EPC for plants and facilities

■ Toyo U.S.A., Inc.

15415 Katy Freeway, Suite 600, Houston, TX 77094, U.S.A.
Tel: 1-281-579-8900 Fax: 1-281-599-9337
EPC for plants and facilities

■ TS Participações e Investimentos S.A.

Edifício Birman 12, 1º andar, Rua Alexandre Dumas, nº 1.711, Chácara Santo Antônio, São Paulo, SP 04717-911, Brazil
Tel: 55-11-5525-4834 Fax: 55-11-5525-4841
URL <https://www.toyosetal.com/>
EPC for plants and facilities, and offshore modules fabrication & integration

Domestic Group Companies

■ TEC Project Services Corporation

2-8-1 Akanehama Narashino-shi, Chiba 275-0024, Japan
Tel: 81-47-454-1178 Fax: 81-47-454-1550
EPC and maintenance services for plants and facilities, environmental technology

■ TEC Business Services Corporation

2-8-1 Akanehama, Narashino-shi, Chiba 275-0024, Japan
Tel: 81-47-413-7670 Fax: 81-47-413-7650
URL <https://www.tbiz.co.jp/english/>
Staffing service, contracted business service, translation and interpretation service, facility management service

■ TEC Air Service Corporation

2-6-7 Ginza, Chuo-ku, Tokyo 104-0061, Japan
Tel: 81-3-3564-0130 Fax: 81-3-3564-0203
URL <https://www.tec-air.co.jp/>
Travel and insurance services

■ TEC Accounting & Consulting Ltd.

2-8-1 Akanehama, Narashino-shi, Chiba 275-0024, Japan
Tel: 81-47-454-1690 Fax: 81-47-454-1289
URL <https://www.ta-c.co.jp/english/>
Business support and consulting for accounting and accounting system development

■ Chiba Data Center Corporation

6-5-3 Tendai, Inage-ku, Chiba-shi, Chiba 263-0016, Japan
Tel: 81-43-284-3611 Fax: 81-43-284-3533
URL <https://www.chiba-data.co.jp/>
Data entry, scanning services and commercial printing

*EPC: Engineering, Procurement and Construction



TOYO ENGINEERING CORPORATION INFORMATION

Your Success, Our Pride.

(As of July 1, 2022)

©Toyo Engineering Corp.

Printed in Japan

Corporate Data



Haruo Nagamatsu
President and CEO

Corporate Name: Toyo Engineering Corporation (TOYO)

Founded: May 1, 1961

Number of Employees: 5,900
(Consolidated, including the equity method affiliates, As of March 31, 2022)

Paid-in Capital: ¥18,198 million

Business Activities:

Engineering and Construction for Industrial Facilities

R&D support, design, engineering, procurement, construction, commissioning, technical assistance for industrial facilities: oil, gas, oil & gas development, petrochemicals, chemicals, water treatment, transportation systems, power generation, nuclear power, advanced production systems, pharmaceutical, fine chemical, distribution systems, biotechnology, environment and others

Board of Directors, Auditors and Executive Officers

Chairman

Tomohisa Abe

President & CEO

Haruo Nagamatsu*1

Executive Vice President

Masayuki Yoshizawa*1

Directors

Noriyoshi Torigoe (CCO)

Kensuke Waki (CFO)

Masami Tashiro*2

Reiji Yamamoto*2

Tatsuya Terazawa*2

Sayoko Miyairi*2

Audit & Supervisory Board Members

Toshihiko Nemura

Chihiro Ubukata

Hideki Matsuo*3

Kiyohito Uchida*3

Senior Executive Officers

Eiji Hosoi

Shoji Koshikawa

Hiroshi Fujita

Keiji Morino

Casey Matsumuro

Eiichiro Fukuhara

Yasutaka Suzuki

Executive Officers

Masahiro Fujino

Toshitsugu Fukai

Yoshinari Miyazaki

Eiji Sakata

Masato Otsuki

Yasuo Miyokawa

Katsumi Hashimoto

Naoyuki Sawada

Ryoji Nakamura

Kenichi Tominaga

*1: Representative Director

*2: Outside Director

*3: Outside Auditor

CCO: Chief Compliance Officer

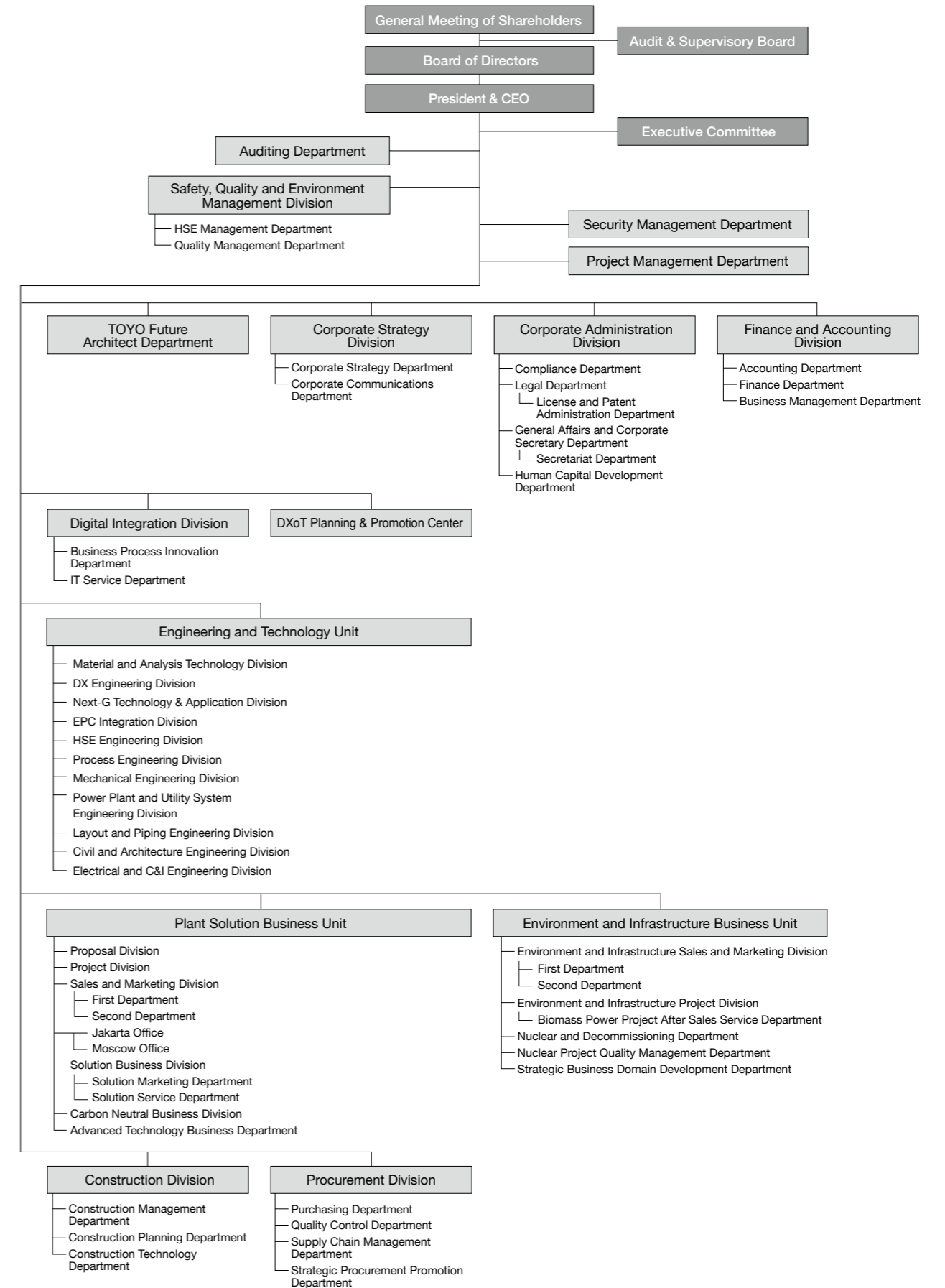
CFO: Chief Financial Officer

(As of June 25, 2022)

History

- | | |
|---|---|
| <p>1961 • TOYO was established. Capital: 300 million yen</p> <p>1962 • An agreement for engineering service and technical assistance was concluded with Lummus Co. (U.S.A.).</p> <p>1963 • The first overseas contract for a fertilizer plant with The Fertilizer Corporation of India Ltd. was awarded.</p> <p>1965 • TOYO was awarded its first ethylene plant contract (Osaka, Japan).</p> <p>1972 • International Procurement & Service Corporation (Currently Toyo Engineering Europe, S.r.l.) established.</p> <p>1975 • Capital: 1,890 million yen</p> <p>1976 • Toyo Engineering India Limited established.</p> <p>1978 • Capital: 2,970 million yen</p> <p>1980 • Capital: 3,300 million yen
• TOYO was listed on the second section of the Tokyo Stock Exchange.</p> <p>1982 • Capital: 5,040 million yen
• TOYO was listed on the first section of the Tokyo Stock Exchange.</p> | <p>1986 • Toyo U.S.A., Inc. established.</p> <p>1987 • Toyo Engineering & Construction Sdn. Bhd. established in Malaysia.</p> <p>1989 • Capital: 12,219 million yen</p> <p>1993 • Capital: 13,017 million yen</p> <p>1994 • TOYO received ISO 9001 registration.</p> <p>2004 • TOYO received ISO 14001 registration.
• Toyo Engineering Corporation, China established.</p> <p>2006 • Capital: 18,199 million yen</p> <p>2009 • TOYO formulated the Group MVV (Mission, Vision, Values).</p> <p>2011 • TOYO invested in PT. Inti Karya Persada Teknik (IKPT) in Indonesia.</p> <p>2012 • TS Participações e Investimentos S.A. established.</p> <p>2018 • Haruo Nagamatsu was elected as President and CEO.</p> <p>2021 • New medium-term management plan (starting from FY2021 to 25)</p> <p>2022 • Move TSE Prime Market</p> |
|---|---|

Organization



HSE: Health, Safety and Environment

(As of July 1, 2022)